



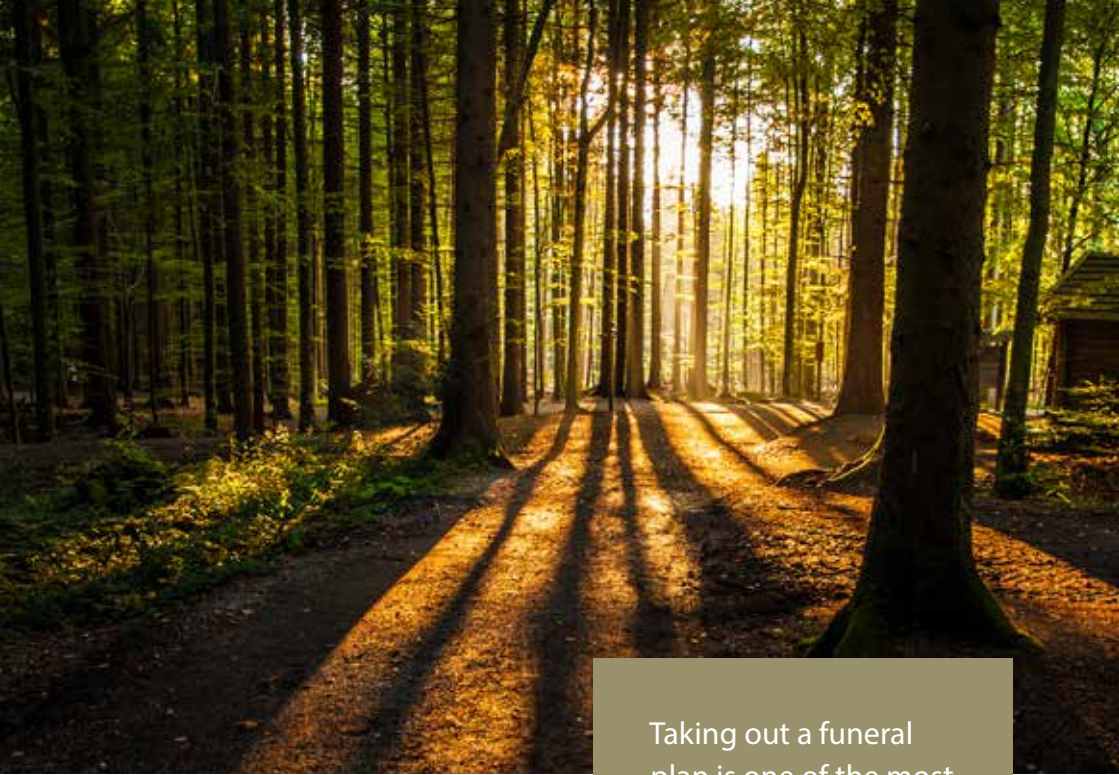
# W A Truelove & Son Ltd

Funeral Directors, Monumental Craftsmen  
& Repatriation Specialists



Reduce the  
worry for  
loved ones

Peace of mind with a  
**pre-paid funeral plan**  
through us



Taking out a funeral plan is one of the most thoughtful and caring things you can do

## Plan ahead for peace of mind

If you've ever had to arrange a funeral for someone, you'll know just how much there is to decide and how difficult it can be.

By taking some time now, you can provide both financial and practical help for your loved ones in the future. It can be comforting and reassuring to have your funeral arrangements in place.

A pre-arranged funeral plan is a simple way of reducing worry for your loved ones.

We deal with funeral plans on behalf of customers on a daily basis and see the difference they can make. What's more, making funeral arrangements in advance needn't be distressing.

# Make provision for funeral costs

The funeral plans we offer cover our funeral director's costs. As long as we carry out the funeral and your requirements don't change, your loved ones won't be asked to pay more for our funeral director's costs when the time comes.

You can also include a contribution towards third party costs such as the fees for cremation or interment,

doctors' fees (if applicable) and payment to an officiant. Please refer to the questions and answers overleaf and the Terms and Conditions for more information.

**Make financial provision today**

## What happens to my money?

Our funeral pre-payment plans are provided by Ecclesiastical Planning Services.

The value of the plan (excluding the initial administration fee and any instalment charges) is held in a whole of life assurance policy and ring-fenced

for your funeral when the time comes. The money is made immediately available at the time of need and the funds cannot be used for anything other than your funeral for total peace of mind.

## A choice of services to suit you

Everyone has their own ideas about the funeral they would like. You may choose something simple and straightforward, or you might prefer a funeral with additional services and special touches.



# Questions and answers

There are a number of funeral plans to choose from and it can be difficult to know which is best for your needs and budget. There are a few things to ask before buying a funeral plan:

## **Q. Who is eligible?**

UK residents aged 18 or over can take out a plan. If paying by instalments of two years or more, eligibility criteria applies - please refer to the Terms and Conditions for more information. There are no medical or health questions to answer.

## **Q. Can the plan include special wishes?**

Yes, you can add special wishes and requests such as song choices, readings, information for a eulogy and so on. There is no charge to add these details. There may be more to pay if you require additional features, services or upgrades.

## **Q. Can I buy a funeral plan for someone else?**

Yes, many of our customers choose to do this.

## **Q. What happens if I move to a different part of the country?**

If you move, you should be able to transfer your plan to a funeral director near your new home. However, there may be additional costs depending on local prices. Please refer to the Terms and Conditions for details or speak to a member of the team for more information.

## **Q. Does the plan cover the entire cost of the funeral?**

The plan covers our funeral director's costs listed in the plan details as long as your requirements don't change and we carry out your funeral.

The plan can also include an allowance towards third party costs such as the fees for cremation or interment, doctors' fees (if applicable) and payment to an officiant. These costs are outside of our control. If these costs, as listed in the plan details, are not covered by the plan value at the time of need, there will be a balance to pay. Please refer to the Terms and Conditions for more information.



### **Q. Can I pay for my plan by instalments?**

Yes, you are able to pay over a range of periods. Please refer to the Instalment Q&A and the Terms and Conditions for more information. Eligibility criteria applies and there's an additional cost for paying over two or more years. We can provide you with a personalised quote.

### **Q. Can I change my funeral plan arrangements?**

Yes, you can make changes to your plan after you have taken it out and fully-paid for it. Just let us know what you wish to change. There may be an additional cost if you add new features and services to your plan.

### **Q. Can I cancel my plan?**

Yes, you can cancel the plan at any time before a claim being made. If you cancel within 30 days of receiving your welcome booklet, the person who paid for the plan will receive a full refund. If you cancel after that, the person who paid for the plan will receive a refund of the original amount, less the administration fee. For instalment plans, if you cancel in the first 12 months a full refund will be paid. If you cancel after that, the administration fee and any payments to insure the plan will be deducted from the refund.

### **Q. What happens if I die abroad?**

The plan does not cover the cost of a funeral abroad, or the cost of repatriating the deceased. It is therefore important that your travel insurance policy covers this.

Please refer to the Funeral Plan Summary and Terms and Conditions for full details.

# About Ecclesiastical Planning Services



Ecclesiastical's office in Gloucester

Ecclesiastical Planning Services works with funeral directors across the country. It is part of the Benefact Group which is a family of award-winning, specialist financial services businesses that, from its profits, gives to good causes in order to transform lives and communities.

Ecclesiastical Planning Services has been recognised by the National Association of Funeral Directors for treating customers fairly (2024)





## Talk to someone you know and can trust

An independent, family firm since 1885, Simon and David Truelove continue to build their company's reputation by offering a dedicated and sympathetic service to the local community.

We arrange funerals personally, with compassion and care through our dedicated and professional team, treating your family as we would like to be treated ourselves.

We pride ourselves on giving you the highest levels of care, always taking time to understand your requirements.

Our funeral plans, although locally priced and packaged, are provided by Ecclesiastical Planning Services, a national provider, to give you peace of mind.

Our dedicated funeral plan manager can answer any questions you may have, and put plans in place so you can relax knowing your affairs are in order.



# W A Truelove & Son Ltd

Funeral Directors, Monumental Craftsmen  
& Repatriation Specialists

## Head Office

118 Carshalton Road, Sutton, Surrey SM1 4RL  
Tel. 020 8642 8211

Email [info@watltd.co.uk](mailto:info@watltd.co.uk) • Visit [www.watltd.co.uk](http://www.watltd.co.uk)

### ASSTEAD OFFICE

7 Craddocks Parade  
Ashted KT21 1QL  
Tel. 01372 270 920

### BANSTEAD OFFICE

121 High Street  
Banstead SM7 2NS  
Tel. 01737 212 160

### CATERHAM OFFICE

11/13 Godstone Road  
Caterham CR3 6RE  
Tel. 01883 345 345

### CHEAM OFFICE

31 High Street, Cheam  
SM3 8RE  
Tel. 020 8642 3300

### COULSDON OFFICE

55 Chipstead Valley Road  
Coulsdon CR5 2RB  
Tel. 020 8660 2620

### DORKING OFFICE

215 High Street  
Dorking RH4 1RU  
Tel. 01306 887 000

### EPSOM OFFICE

14/18 Church Road  
Epsom KT17 4AB  
Tel. 01372 723 337

### FETCHAM OFFICE

105 The Street  
Fetcham KT22 9RD  
Tel. 01372 388 400

### LEATHERHEAD OFFICE

55 Church Street  
Leatherhead KT22 8EP  
Tel. 01372 370 100

### MITCHAM OFFICE

Donald S. Drewett  
49/51 Upper Green East  
Mitcham CR4 2PF  
Tel. 020 8648 2905

### MORDEN OFFICE

254 Martin Way  
Morden SM4 4AW  
Tel. 020 8540 6667

### MOTSPUR PARK OFFICE

357 West Barnes Lane  
Motspur Park KT3 6JF  
Tel. 020 8949 6677

### REIGATE OFFICE

26 Church Street  
Reigate RH2 0AN  
Tel. 01737 221 409

### SUTTON OFFICE

22 Mulgrave Road  
Sutton SM2 6LE  
Tel. 020 8642 0089

### WALLINGTON OFFICE

107 Stafford Road  
Wallington SM6 9AP  
Tel. 020 8647 1032

### WORCESTER PARK OFFICE

350/352 Malden Road  
Worcester Park KT4 7NW  
Tel. 020 8335 3100

### MONUMENTAL DEPARTMENT

3 Langley Park Road  
Sutton SM1 4TB  
Tel. 020 8642 0327



## ecclesiastical

Planning Services

Ecclesiastical Planning Services, Benefact House, 2000 Pioneer Avenue, Gloucester Business Park, Brockworth, Gloucester, GL3 4AW.

Tel: 0800 633 5626 Email: [info@epsfunerals.com](mailto:info@epsfunerals.com)

W A Truelove & Son Ltd, 118 Carshalton Road, Sutton, Surrey SM1 4RL Reg. No. 00293103 is an Appointed Representative of Ecclesiastical Planning Services Limited Reg. No. 2644860, registered in England at Benefact House, 2000 Pioneer Avenue, Gloucester Business Park, Brockworth, Gloucester, GL3 4AW, UK, which is authorised and regulated by the Financial Conduct Authority. Firm Reference Number 958152.

POD/1024